



PennState
Smeal College of Business

Penn State Executive &
Professional Programs

Your business success starts
with **better business partners.**

Penn State Executive & Professional Programs

Schedule

Penn State Executive & Professional Programs partners with leaders around the globe to develop skills proven to improve performance. Designed and led by Penn State faculty, our programs teach strategies that empower you to confidently deliver results.

Let's go into business, together.





Penn State Executive & Professional Programs are delivered in a live remote format. Our small-group sizes, breakout discussions, hands-on activities, and Q&A sessions encourage active engagement with your peers and instructors.

Leadership and Strategy

Complete three programs to earn a professional certificate in Strategy and Organizational Performance.

Communication Strategy for Leaders

December 17-19, 2025
\$2,100; Discount Rate: \$1,890

Learn a methodology for framing and communicating strategic vision across the organization with particular focus on leading across generations.

Implementing Strategy for Success

Dates coming! Contact us to be notified.
\$3,100; Discount Rate: \$2,790

Develop an integrated approach to strategy implementation and change management.

Leading with Analytics : Foundations of Analytic Decision Making

November 3-5, 2025
\$2,100; Discount Rate: \$1,890

Learn analytics tools and techniques that can help leaders use vast amounts of data to solve challenging real-world problems.

Leading for Results: Strategic Financial Management

December 16-19, 2025
\$3,100; Discount Rate: \$2,790

Connect business decisions with their financial consequences and view finance as an operational element of a successful organization.

Strategic Leadership

October 27-30, 2025
\$3,100; Discount Rate: \$2,790

Align your organization's strategies, leadership, and culture; assess opportunities among competition; and develop future-focused strategies.

The Execution Challenge: Turning Strategy Into Action

September 29-October 2, 2025
\$4,650; Discount Rate: \$4,185

Learn how to bridge the gap between strategy and execution with a proven framework for success in this companion course to *The Execution Challenge: Delivering Great Strategy at Scale*. Dive deep into key concepts with hands-on practice, case studies, and real-world examples.

[View programs](#) 

Supply Chain Management

Complete three programs to earn a professional certificate in

Supply Chain Leadership **L**, Supply Chain Management **M**, or Supply Chain Operations **O**

Achieving Supply Chain Transformation **L** **M**

November 3-6, 2025
\$2,400; Discount Rate: \$2,160

Acquire models and tools for adaptability and leadership skills for creating a high-performing supply chain.

Aligning Supply Chain Organizations **L** **M**

November 12-14, 2025
\$1,600; Discount Rate: \$1,440

Learn to coordinate initiatives so that your enterprise functions seamlessly in service of your customers.

Building a Sustainable Supply Chain **L**

June 30-July 3 or November 17-20, 2025
\$2,400; Discount Rate: \$2,160

Enhance supply chain sustainability to better manage financial, social, and environmental risks and opportunities.

Developing Strategic Supply Chain Leaders **L**

September 8-11, 2025
\$2,400; Discount Rate: \$2,160

Develop supply chain systems to align with organizational strategy and create competitive advantage.

Essentials of Supply Chain Management **M**

December 1-4, 2025
\$2,400; Discount Rate: \$2,160

Learn the critical concepts required to lead an integrated supply chain operation.

Forecasting and Inventory Management **O**

August 26-28, 2025
\$1,600; Discount Rate: \$1,440

Explore the impact of inflated inventory levels, diagnose process constraints, and leverage techniques to improve performance.

Fulfillment Operations Management **O**

August 5-7, 2025 or December 8-10, 2025
\$1,600; Discount Rate: \$1,440

Acquire a primary understanding of end-to-end fulfillment operations from forecasting to delivery.

Introduction to Supply Chain Analytics **O**

October 28-30, 2025
\$1,600; Discount Rate: \$1,440

Learn foundational techniques to evaluate logistics and supply chain performance.

Processes and Tools for Supply Chain Success **M**

September 15-18, 2025
\$2,400; Discount Rate: \$2,160

Learn tools, techniques, and approaches to define, analyze, and improve each major SCOR® function and process area.

Strategic Procurement and Purchasing **O**

October 21-23, 2025
\$1,600; Discount Rate: \$1,440

Learn basic principles of purchasing and develop strategies in supplier negotiations impacted by economic and regulatory issues.

Supply Chain Security and Risk Management **L**

June 30-July 3, 2025 or November 17-20, 2025
\$2,400; Discount Rate: \$2,160

Learn a practical process that applies intelligence analysis and risk management to anticipate, mitigate, and avoid supply chain risks.

Transportation Operations and Sourcing **O**

July 8-10, 2025 or January 6-8, 2026
\$1,600; Discount Rate: \$1,440

Discover modal options, analyze freight needs, and explore negotiation tactics to improve service levels and reduce costs.

[View programs](#) 

Analytics

Complete three programs to earn a professional certificate in Analytics.

Applied Analytics: Essential Tools and Techniques

September 8-11, 2025
\$3,100; Discount Rate: \$2,790

Learn how to leverage data and apply analytical techniques to gain valuable insights and support decision-making in a variety of business and operational scenarios.

Introduction to Analytics: Transforming Data into Insights

December 2-4, 2025
\$2,100; Discount Rate: \$1,890

Survey common tools and techniques for data analysis with a focus on supporting evidence-based business decisions.

Leading with Analytics : Foundations of Analytic Decision Making

November 3-5, 2025
\$2,100; Discount Rate: \$1,890

Learn analytics tools and techniques that can help leaders use vast amounts of data to solve challenging real-world problems.

Introduction to Supply Chain Analytics

October 28-30, 2025
\$1,600; Discount Rate: \$1,440

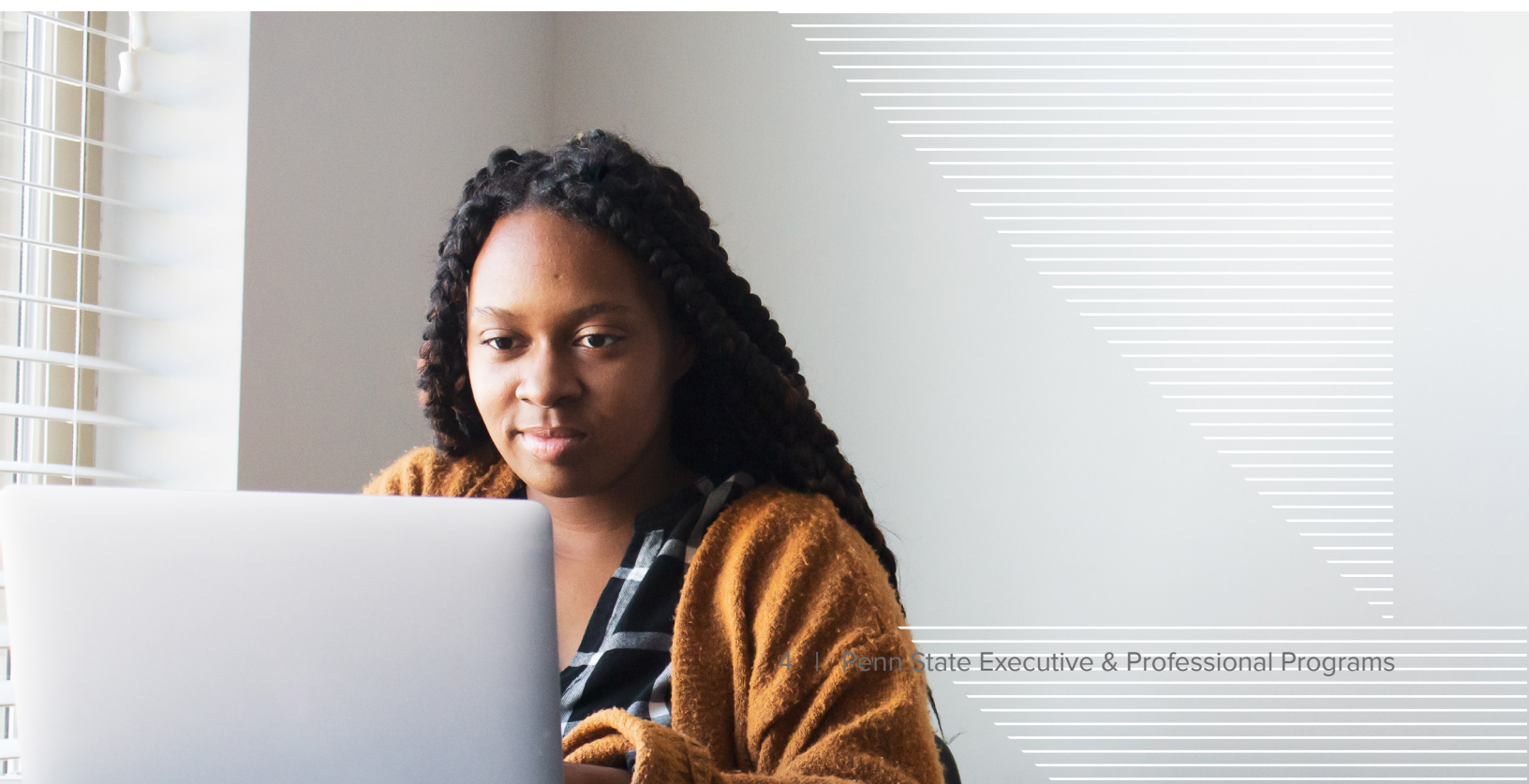
Learn foundational techniques to evaluate logistics and supply chain performance.

Supply Chain Security and Risk Management

June 30-July 3, 2025 or November 17-20, 2025
\$2,400; Discount Rate: \$2,160

Learn a practical process that applies intelligence analysis and risk management to anticipate, mitigate, and avoid supply chain risks.

[View programs](#)



Professional Certificates

Earning a Professional Certificate is a win-win for you and your organization. Your certificate will prepare you to manage new responsibilities, address organizational competency gaps, and contribute to broader enterprise goals. Earn multiple certificates to become a **Professional** or **Executive** scholar. These premium scholar statuses demonstrate commitment to professional development.

	Professional Scholar	Executive Scholar
Professional Certificate		
Complete three programs to earn one of the following Professional Certificates:	Complete two Professional Certificates to become a Professional Scholar , and you'll also be awarded:	Complete three Professional Certificates to become an Executive Scholar , which awards you:
<ul style="list-style-type: none">• Analytics• Strategy and Organizational Performance• Supply Chain Leadership• Supply Chain Management• Supply Chain Operations	<ul style="list-style-type: none">• Professionally framed certificate	<ul style="list-style-type: none">• Engraved award• 1-year membership to the Penn State Alumni Association• Attendance to the Center for Supply Chain Research® Leadership Forum

Add an Emphasis

To expand your qualifications, earn a Professional Certificate with an Emphasis of your choice. To add an emphasis, select two programs in one of our main portfolios (Leadership & Strategy, Supply Chain, or Analytics) and a third program from another portfolio. Some of our most popular professional certificates with emphasis are:

- Analytics - emphasis in Organizational Performance
- Analytics - emphasis in Supply Chain Leadership
- Strategy & Organizational Performance - emphasis in Supply Chain Leadership
- Supply Chain Leadership - emphasis in Organizational Performance

Custom certificate

Your Professional Certificate should match your professional goals—no matter how diverse and unique they are. Break the mold with a cross-disciplinary custom certificate. Collaborate with us to build a specialized learning path that combines programs across portfolios.

Qualify for **reduced rates**

Did you know there are several ways to qualify for a reduced rate?

- Participants who commit to **earn a Professional Certificate** (three programs)
- **Military or government** employees
- **Alumni** of Penn State
- **Teams of 3+** participants from the same organization
- **CSCR**® Corporate Sponsors and other affiliated groups



Customize for your team

All programs may be customized for your team. We can adjust program content, length, time, and location to meet your organization's goals. The level of customization is entirely up to you and can be adjusted according to your learning needs, schedule, and budget.

Let's explore your options

Speak with one of our Learning Specialists to discuss your learning goals, program availability, certificate paths, and possible reduced rates.

Request information



Schedule a meeting



PennState
Smeal College of Business

Penn State Executive &
Professional Programs

Penn State Executive & Professional Programs

Smeal College of Business

The Pennsylvania State University

220 Business Building, University Park, PA 16802

www.psep.smeal.psu.edu

psep@psu.edu

800-311-6364

Penn State is an equal opportunity, affirmative action employer, and is committed to providing employment opportunities to all qualified applicants without regard to race, color, religion, age, sex, sexual orientation, gender identity, national origin, disability or protected veteran status. Nondiscrimination: <https://policy.psu.edu/policies/ad85>. UBR BUS 24-32-JH